



# UVeco

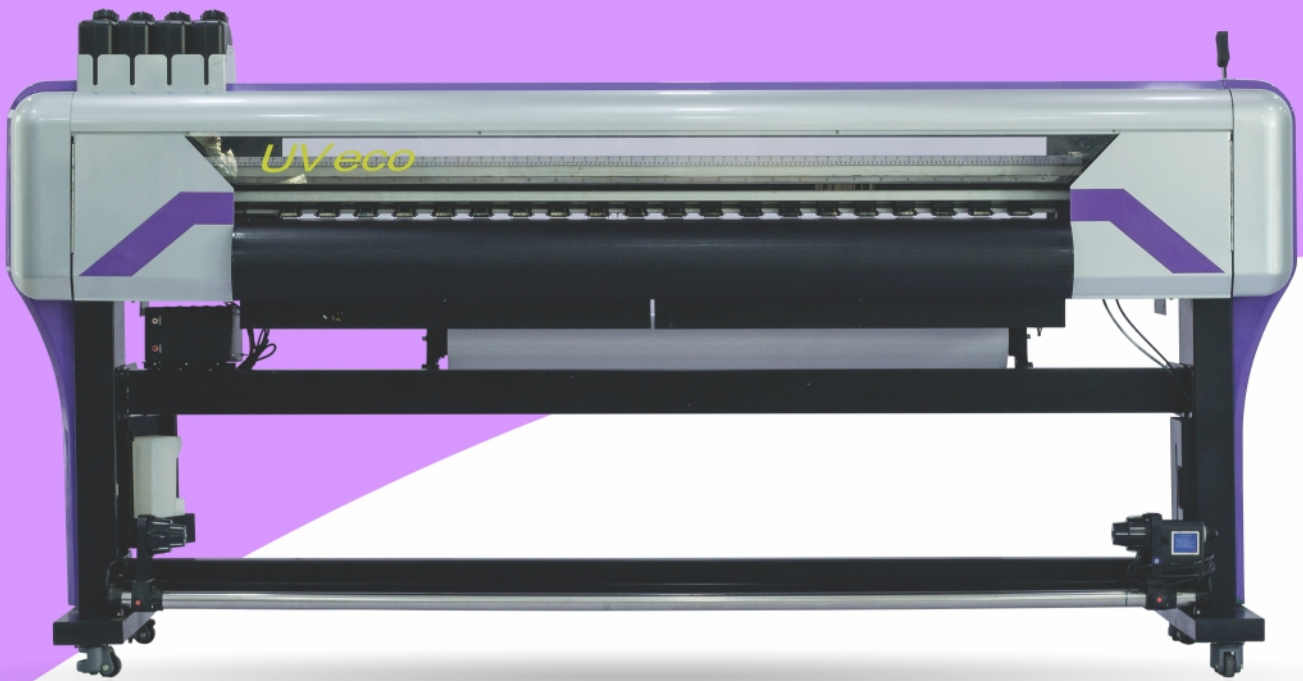
UV Roll to Roll & Hybrid Printer



**macart**



[www.macartworld.com](http://www.macartworld.com)



## UVeco R60 GH2220 - Roll to Roll



### Specifications

|  |   |
|--|---|
| <b>Resolution :</b>                    | 720 x 1200dpi   |
| <b>Speed sqft/hr :</b>                 | High 150,<br>Med (standard Quality) 100,<br>low (high quality) 70 |
| <b>Drop Size :</b>                     | 3 pl  |
| <b>Print Head :</b>                    | Ricoh GH2220 – 3pl – 4nos   |
| <b>LED UV lamp :</b>                   | 395nm air cooled.   |
| <b>Colors :</b>                        | CMYK ( W optional)  |
| <b>Ink :</b>                           | UV pigment based 395nm LED.                                       |
| <b>Print Width :</b>                   | 5 feet / 1524 mm  |
| <b>Print Width Hybrid (Optional) :</b> | 4ft x 8 ft / 1220mm x 2438mm                                      |
| <b>Media Width :</b>                   | Vinyl, Backlit Fabric, Clear                                      |
| <b>Media Type for</b>                  | Vinyl, Translite, Canvas, Backlit Flex,<br>Flex, Wall Paper, etc. |
| <b>Media For Hybrid (Optional) :</b>   | PVC foam sheet 3mm,<br>PVC / Plastic corrugate sheet.             |
| <b>RIP Software :</b>                  | Star RIP  |
| <b>Approx ink consumption:</b>         | CMYK 10ml/SQM-1ml/sqft  |
| <b>Operating system:</b>               | Win8 or Win10   |
| <b>Interface :</b>                     | USB 3.0   |
| <b>Power Requirement :</b>             | 230 VAC, 50Hz, Single Phase.                                      |
| <b>Power Consumption :</b>             | 500 W.  |
| <b>Operating temperature:</b>          | 22-28 °C  |



### Features

- High Speed & High Quality with small 3 Pl drop size.
- Extremely reliable print quality with UV inks.
- Air Cooled Eco-Friendly UV LED curing system.
- No heaters required.
- Low noise linear bearings with advance caged bearing blocks.
- Servo motors for high speed carriage motion.
- Media Pinch roller with boll bearings.
- DC Servo for precise media displacement.
- Powerful media suction.
- Auto Head capping and cleaning.
- Media feed and take up system.
- Hard Aluminum alloy timing pulleys for long life.
- German belts.
- Macart manufactured cable drag chain for smooth & long life.
- Low power consumption.
- Compact Body.
- More than 70% Aluminum body for long life.
- Hybrid system (Optional) for rigid media printing.



**UVeco H60 GH2220 - Hybrid**



**Applications for R2R & Hybrid**



**BACKLIT**



**CANVAS**



**FLOOR GRAPHICS**



**FOAM SHEET(HYBRID)**



**GLASS FILM**



**INDOOR SIGNAGE**



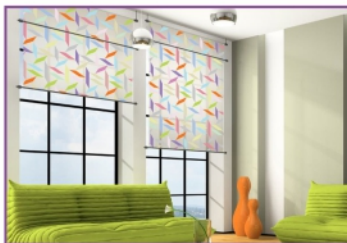
**LEATHER BAG**



**LEATHER SOFA**



**NON WOVEN BAGS**



**PRINTED ROLLER BLINDS**



**STANDEE DESIGN**



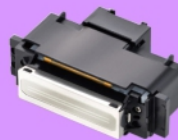
**WALLPAPER**

Manufacturer :

**macart**  
equipment pvt. ltd.



**RICOH**



Ricoh GH2220 - Head



5, Krishna Kunj Bldg., 64/31, Erandwane, Karve Road, Pune - 411 004. Maharashtra (India)

+91-20-25440973 / +91-8975 759894 / +91-7888 04 7970

sales@macartworld.com